



Structure of Talk

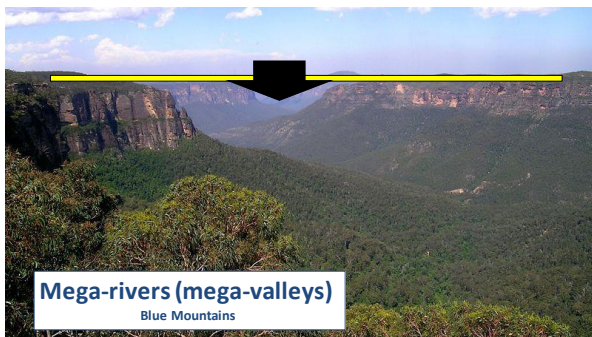
- A. Reiterate the scope and depth of landscape evidence regarding Noah's Flood
- B. Outline an unusual water gap case study from central Australia

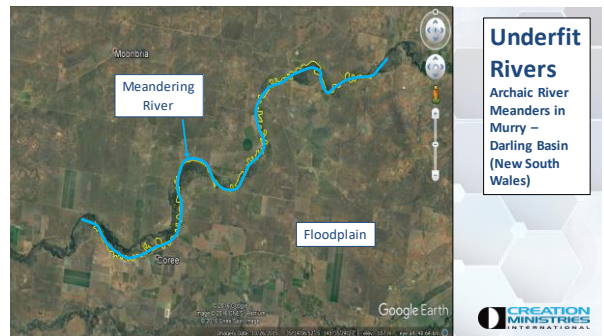


Features Commonly Described in Creation Literature

- Plateaux
- Sedimentary Layers
- Discontinuous Boundaries
- Boulder Fields
- Mega-Valleys
- Underfit Rivers
- Water Gaps







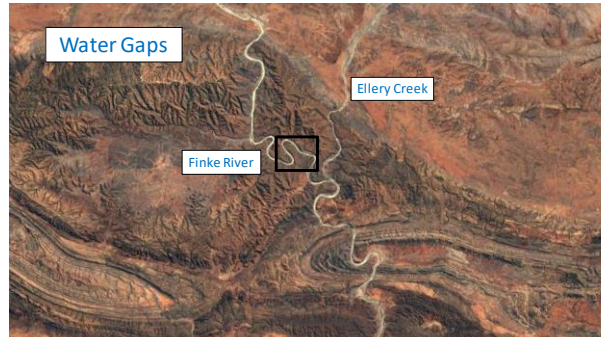
A Water Gap Breakthrough

An outstanding new flood created landscape feature has been identified

The following component of the talk will

- Present an overview of the feature
- Propose an explanation

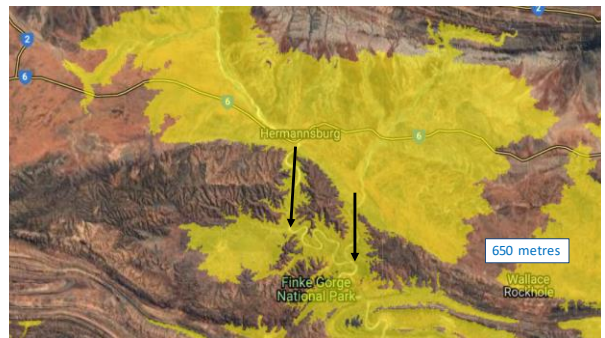
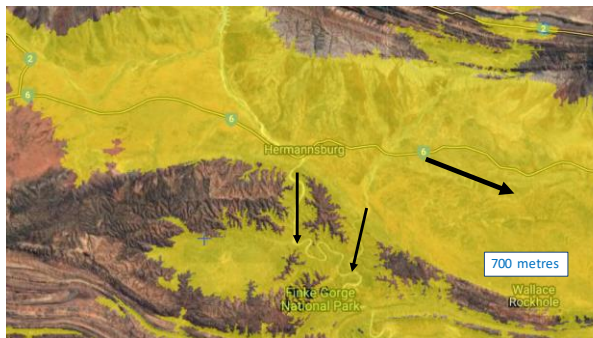




Could They Result From River Migration Or River Avulsions?

- Lateral migration of alluvial river channel
- River avulsion is the rapid abandonment of an established river channel and the formation of a new river channel, on the adjacent floodplain

If neither migration or avulsion, then what processes created these features?



Hypothesis

- The water gaps and the abandoned channels of the Finke and Ellery channels were possibly created during the falling stage of the Flood
- The creation of a second (active) water gap could result from considerable variations in flow volume, velocity, turbulence, sediment movement and more, as the Flood flows change.



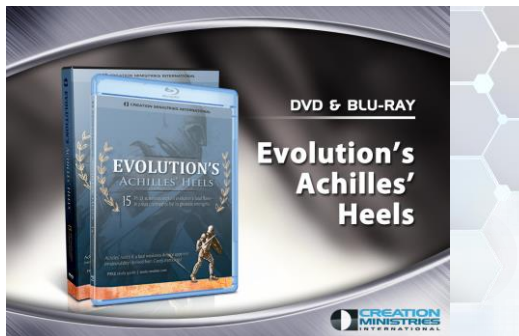
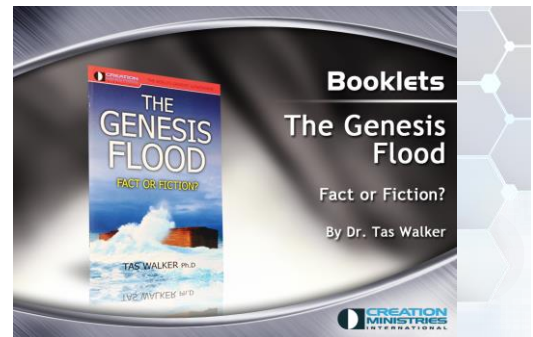
Talk Summary

Many landscape papers available on our website:

creation.com/how-landscapes-reveal-noahs-flood

creation.com/grand-canyon-origin-flood

creation.com/geological-pioneer-nicolaus-steno-was-a-biblical-creationist



Talk Summary

A new landscape feature is recognized today (duplex water gap) – one that may provide additional details on the erosional and depositional processes of Flood decline



Talk Summary

The process of receding water is mentioned repeatedly:

‘the waters receded’ (Genesis 8:1);

‘the water receded steadily from the earth’ (8:3);

‘the waters continued to recede until the tenth month and on the first day of the tenth month the tops of the mountains became visible’. (8:5)



Talk Summary

‘And the Lord was sorry that He had made man on the earth, and He was grieved in His heart. So the Lord said, “I will destroy man whom I have created from the face of the earth, both man and beast, creeping thing and birds of the air, for I am sorry that I have made them.” But Noah found grace in the eyes of the Lord.’ (Genesis 6:6-8)

